

6578000N

- Alkali-feldspar leucogranite and pegmatite
- K-feldspar–phyric granodiorite
- Feldspathic meta-arenite
- Interbedded semipelitic and pelitic gneiss
- Calcsilicate gneiss and marble
- Interbedded psammitic and calcsilicate gneiss
- Psammitic gneiss
- Tonalitic to granitic orthogneiss
- Monzogranite, strongly foliated to gneissic

Snyder Lake till geochemistry (aqua regia partial digestion) Zr (ppm) in <63 μ m fraction

- | | |
|------------|-------------|
| ● 2.4–2.7 | ● 6.21–7.1 |
| ● 2.71–4.3 | ● 7.11–9.4 |
| ● 4.31–5.1 | ● 9.41–12.1 |
| ● 5.11–5.5 | |
| ● 5.51–6.2 | |

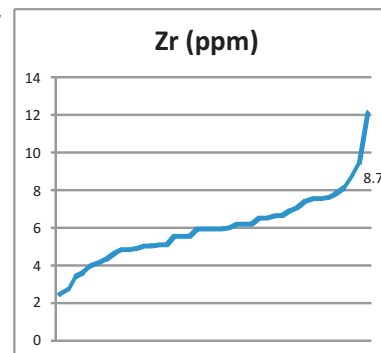


Figure 49: Snyder Lake till geochemistry: partial digestion of <63 μ m fraction, Zr.